

Natural Capital Assessment Tools for the North Devon Marine Pioneer

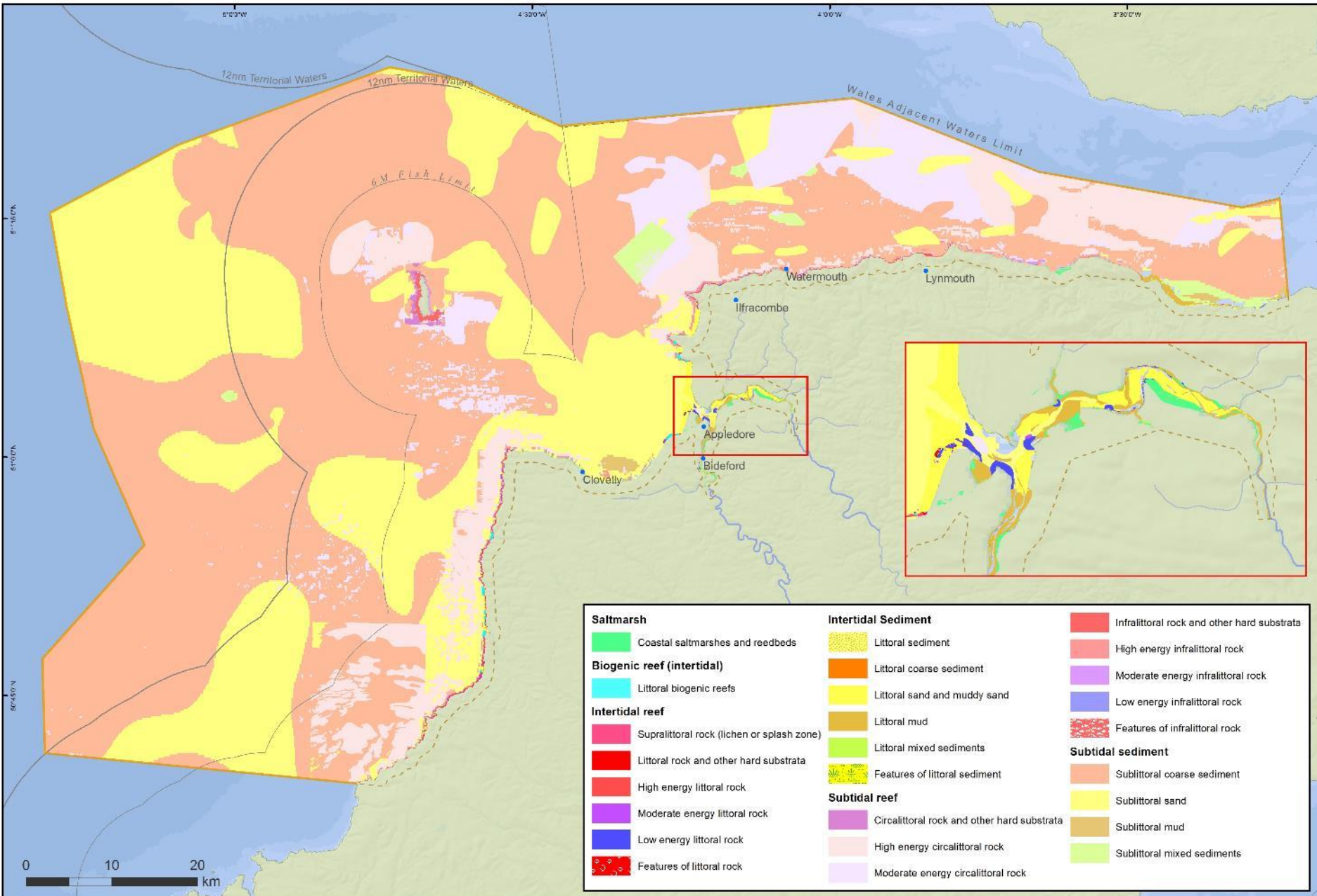
Dr Siân Rees, Matthew Ashley and Andy Cameron
University of Plymouth



Pictures by Keith Hiscock



North Devon Marine Pioneer – The assets



Saltmarsh	Intertidal Sediment	Infralittoral rock and other hard substrata
Coastal saltmarshes and reedbeds	Littoral sediment	High energy infralittoral rock
Biogenic reef (intertidal)	Littoral coarse sediment	Moderate energy infralittoral rock
Littoral biogenic reefs	Littoral sand and muddy sand	Low energy infralittoral rock
Intertidal reef	Littoral mud	Features of infralittoral rock
Supralittoral rock (lichen or splash zone)	Littoral mixed sediments	Subtidal sediment
Littoral rock and other hard substrata	Features of littoral sediment	Sublittoral coarse sediment
High energy littoral rock	Subtidal reef	Sublittoral sand
Moderate energy littoral rock	Circalittoral rock and other hard substrata	Sublittoral mud
Low energy littoral rock	High energy circalittoral rock	Sublittoral mixed sediments
Features of littoral rock	Moderate energy circalittoral rock	

Coordinate System: ETRS 1989 ETRS TMS0 Projection: Transverse Mercator Datum: ETRS 1989 False Easting: 500,000 True Northing: 0 Central Meridian: -5 Scale Factor: 1 Latitude Of Origin: 0 Units: Meter

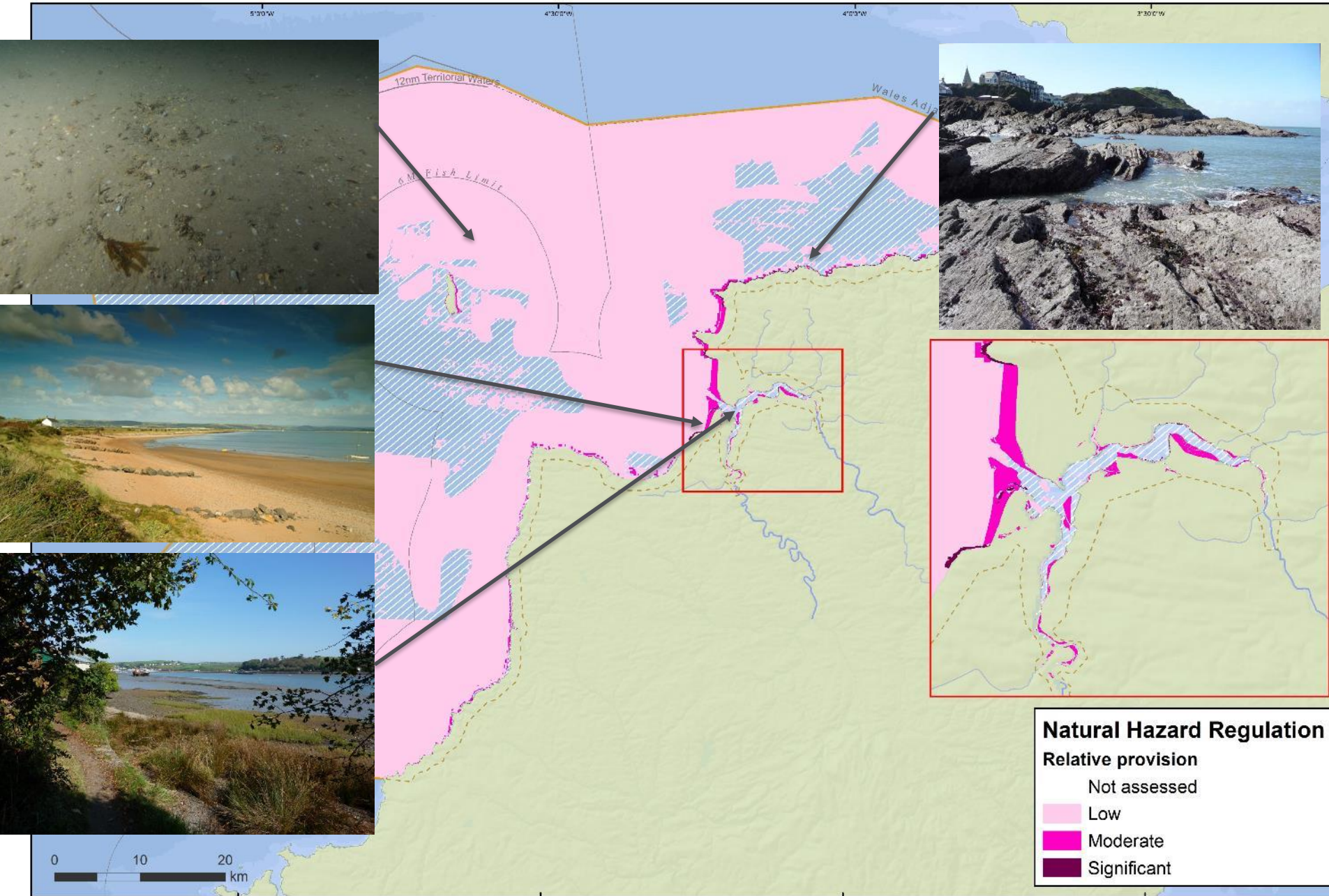
Linking ecology to ecosystem services

		Goods / Benefits				
		from Provisioning services	from Regulating services			from Cultural services
		Food	Healthy climate	Sea defence	Clean water and sediments	Tourism/nature watching
Natural Capital Asset: Habitats in North Devon Marine Pioneer						
Saltmarsh	Saltmarsh	3	3	3	3	3
Intertidal reef	Littoral (intertidal) rock and other hard substrata	3	2	1		1
Subtidal reef	Infralittoral (shallow) rock and other hard substrata	3	2	1		1
	Circalittoral (deep) rock and other hard substrata	1		1		1
Intertidal sediments	Sand and muddy sand	1	2	3		1
	Mud	3	3	3	3	1
Biogenic reef	Intertidal biogenic reefs	2	1	2	2	1
Subtidal sediment	Coarse sediment	2		3	3	
	Sand	2		3	3	
	Mud	2		3	3	
	Mixed sediments	2		3	3	

Literature review

- Level of provision of each ecosystem service from each habitat (literature and expert opinion)
- Shading (darker) is the level of provision of the ecosystem service.
- 1 = Expert opinion, 2=Grey literature, 3 Peer reviewed literature
- Blank: Not assessed – or no data available.

Natural Hazard Regulation: Sea Defence, Flooding and Erosion

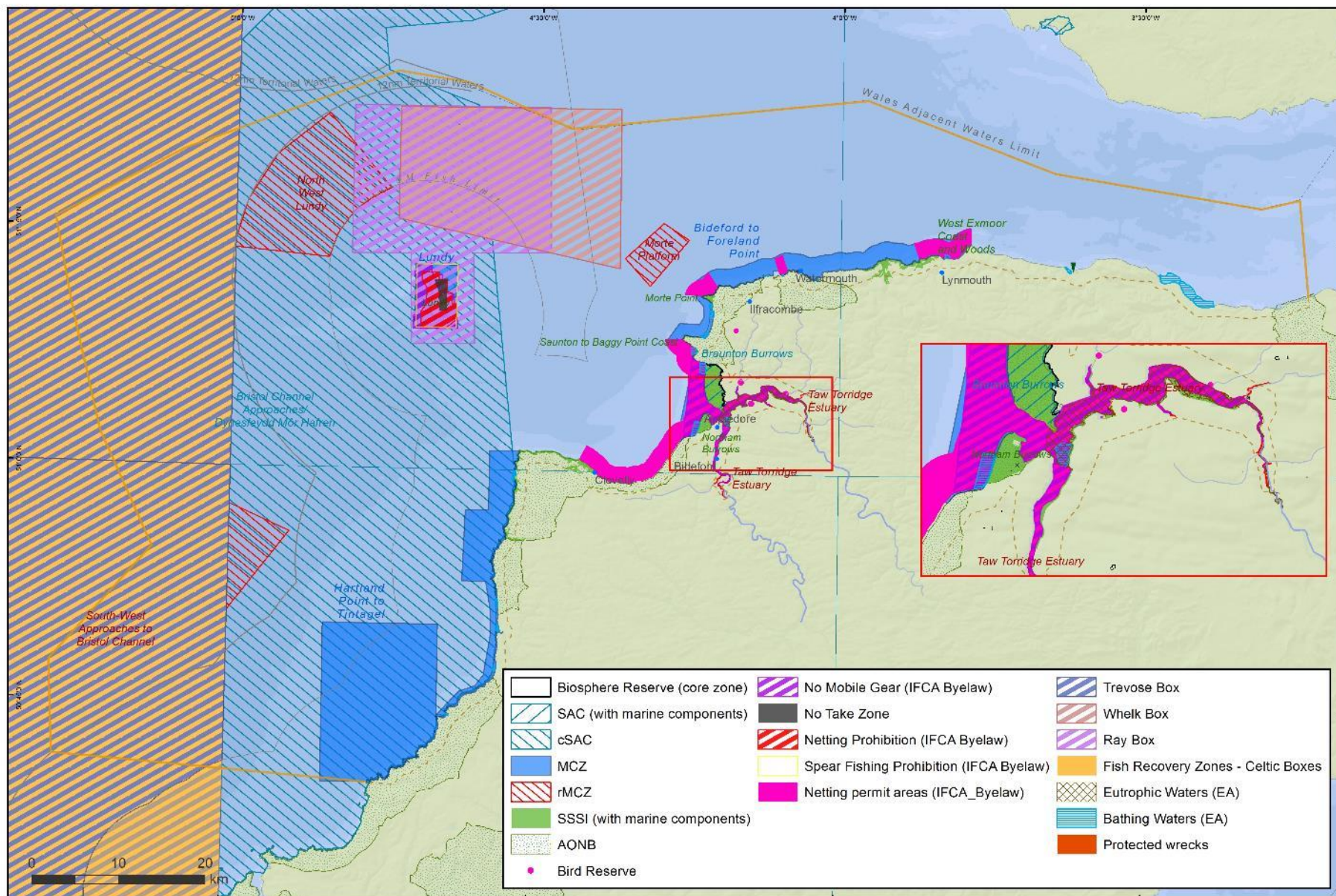


Coordinate System: ETRS 1989 ETRS TM50 Projection; Transverse Mercator Datum; ETRS 1989 Projection; Transverse Mercator Datum; ETRS 1989 False Easting: 500,000; False Northing: 0; Central Meridian: -3; Scale Factor: 1; Latitude Of Origin: 0; Units: Meter; Scale: 1:575,000; Source Layer: Credit; Copyright: 2014; Esri

Risk: An Opportunity to 'Pioneer'



Management Measures



Pressures and Change



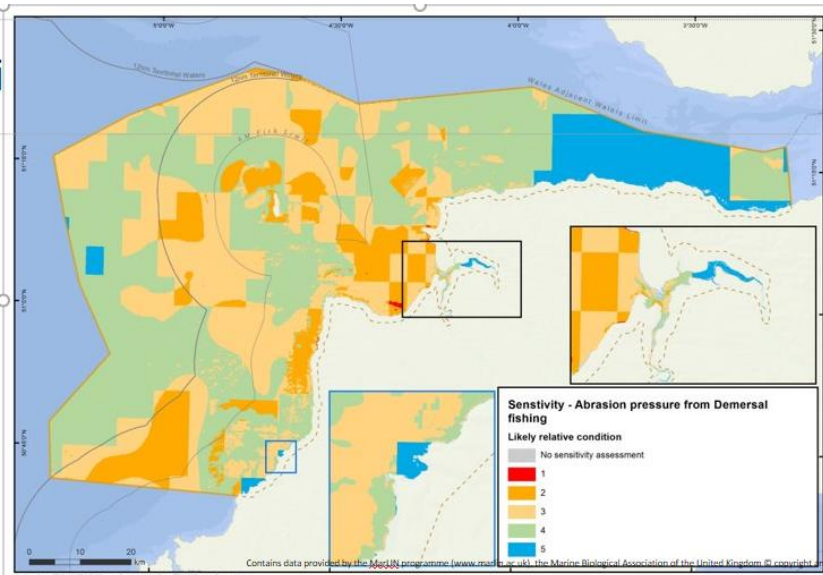
swEEP



Developing a Risk Register (1)



1. Community Based Knowledge of Risk



2. 'Likely Relative Condition'



Developing a Risk Register (2) – Performance Against Policy Targets

Asset	Saltmarsh			Littoral rock			Littoral coarse sediments			Littoral sand and muddy sand			Littoral mud			Littoral mixed sediments			Littoral biogenic reefs			Infralittoral rock			Ci
Risk category policy	Qun	Qal	Sp.	Qun	Qal	Sp.	Qun	Qal	Sp.	Qun	Qal	Sp.	Qun	Qal	Sp.	Qun	Qal	Sp.	Qun	Qal	Sp.	Qun	Qal	Sp.	Qu
Risk cat. Community	Risk: Local community			Risk: Local community			Risk: Local community			Risk: Local community			Risk: Local community			Risk: Local community			Risk: Local community			R			
Food (Wild Food - fish and shellfish).	B (4)	B (4)	C (8)	B (4)	B (4)	B (4)	B (4)	B (4)	B (4)	B (4)	B (4)	B (4)	C (4)	C (4)	C (8)	B (4)	B (4)	C (8)	B (4)	B (4)	C (8)	B (4)	B (4)	B (4)	C (4)
Food - local	[Red]			[Red]			[Red]			[Red]			[Red]			[Red]			[Red]			[Red]			
Healthy climate (carbon sequestration).	B (4)	B (4)	C (8)										C (4)	C (4)	C (8)				B (4)	B (4)	C (8)	B (4)	B (4)	B (4)	
Climate -local	[Red]			[Red]			[Red]			[Red]			[Red]			[Red]			[Red]			[Red]			
Sea defence. (natural hazard regulation / flood prevention).	B (4)	B (4)	C (8)	B (4)	B (4)	B (4)	B (4)	B (4)	B (4)	B (4)	B (4)	B (4)				B (4)	B (4)	B (4)	B (4)	B (4)	C (8)	B (4)	B (4)	B (4)	
Sea defence - local	[Red]			[Red]			[Red]			[Red]			[Red]			[Red]			[Red]			[Red]			
Tourism / nature watching.	B (4)	B (4)	C (8)				B (4)	B (4)	B (4)	B (4)	B (4)	B (4)										B (4)	B (4)	B (4)	C (4)

- 1) Quantity (extent),
- 2) Quality (condition) and
- 3) Spatial configuration



Contact:

Sian.Rees@plymouth.ac.uk

Matthew.Ashley@plymouth.ac.uk

Andy.Cameron@plymouth.ac.uk

 @Dr_Sian_Rees

<https://sweep.ac.uk/>

Project supported by:
Many thanks to Keith Hiscock for providing most of the photos in this presentation

